

Our Offer for You

Industrial and Commercial Spaces

Throughout the Clean Energy Valley Schleswig-Holstein, individual industrial and commercial spaces are available at attractive conditions.

» over 250 acres available



The Heide Region Development Agency is your local mediator, advisor and coordinator. We involve you in the integrated energy region.

Become part of Clean Energy Valley!

Contact us.



Region Heide

Welcome to the West Coast

Located in the heart of Dithmarschen between the metropolis of Hamburg and Scandinavia, Heide Region has distinctive qualities as an economic and commercial location on one hand, and as a residential and recreational area on the other. The city of Heide and its eleven surrounding communities form **a leading and dynamically growing economic region** on the West Coast.

» Nucleus of green industrialization

While the city of Heide is strongly characterized by trade and services, the surrounding area offers best conditions for agriculture, energy production, energy-intensive companies and recreational tourism.



» Working and living where others go on holiday

Let your soul dangle at the dyke of the North Sea, take part in the bustling tourist life in nearby Büsum, go shopping in the city of Heide or enjoy Sankt Peter-Ording with its twelve-kilometer-long and up to two kilometers wide sandy beach.

The Development Agency

For a Strong Future-Oriented Region

In 2013, the Heide Region Development Agency started the transformation of the entire region. Together we stand for positive and future-oriented development from a single source.

Our agency is the central point of contact for matters regarding:

- Economic development
- Settlement projects
- Industrial and commercial sites
- Regional management
- Funding advice
- Project development



Entwicklungsagentur Region Heide AöR

Hamburger Hof 3
25746 Heide

Phone: +49 481 123 703-0
E-mail: info@region-heide.de
Web: www.region-heide.de

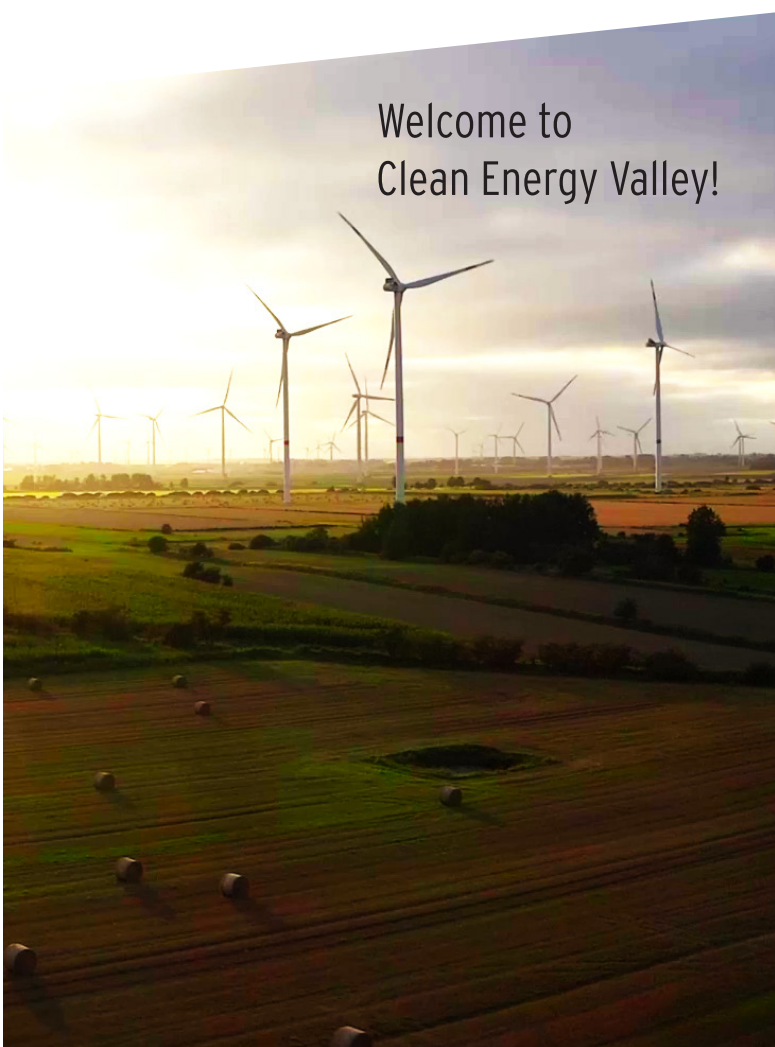


ENTWICKLUNGSAGENTUR REGION HEIDE

Region Heide

Your Future Location

Welcome to
Clean Energy Valley!

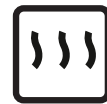




- > 1.000 wind power plants
- > 3 GW onshore electricity capacity
- 4 GW offshore grid connection
- Substation Heide/West (380 kV / 220 kV)
- Substation Schacht-Audorf (2 x 380 kV)
- 15 MWh large-scale electricity storage



- Construction of 30 MW / 700 MW electrolyzers
- Hydrogen storage in salt caverns
- Hydrogen pipeline Heide - Brunsbüttel
- Connection to the European Hydrogen Backbone



- Usage of local waste heat
- Sustainable heat supply



- Bio and circular economy



- Unavoidable carbon dioxide sources available



- Fibre optics backbones



- Distribution centres



- Highways A 7, A 23, A 210, A 215
- Federal roads B 5, B 203, B 430



- Deep water ports in Brunsbüttel, Büsum, Hohenhörn, Rendsburg and Kiel



- Connection to national railway system



- International airport in Hamburg

We offer



space



green energy



infrastructures

for your business.
for your sustainability.

Skilled Employees in Heide Region

From Kindergarten to University

For people of all ages, there is a wide range of offers for schooling, training and further education - according to your wishes.

Important institutions of education and training are the Vocational Training Centre Dithmarschen (BBZ) with its vocational high school programme and the Training and Technology Centre (BTZ) with master craftsman training in the automotive, electrical and plumbing.



At the West Coast University of Applied Sciences, the professionals of tomorrow are trained within a wide selection of bachelor's and master's degree programmes.

The Institute for Transformation of the Energy System (ITE) from the West Coast University of Applied Sciences is the scientific heart of the Clean Energy Valley on the West Coast.

Integrated Energy Region

ENTREE100 - Pioneer of the Energy Transition

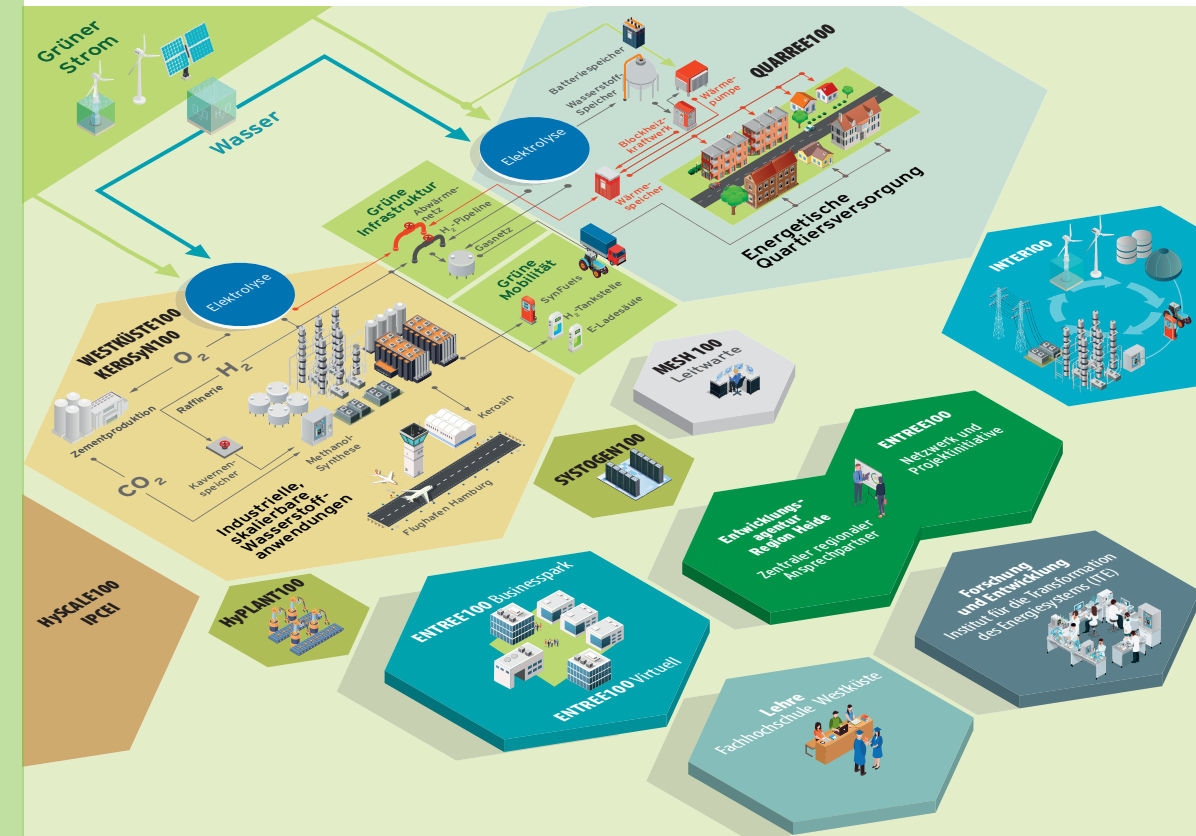
One particular goal of the Heide Region Development Agency is to promote the energy transition in the region, in Germany and also internationally.

To achieve this goal, the project initiative ENTREE100 has been founded. ENTREE100 stands for „Energetic Transformation of Renewable Energies to 100%“ and acts as a technological project initiative and innovation-oriented network.



The future energy systems consists of integrated components.
Single companies form unions and value chains with others.
Ideas become projects. Projects become realisation.
Technologies - business models - regulation

We support you in creating synergies with other companies and projects from the region to establish an **energetic ecosystem** focused on sustainable industries and developments.



The energy system of the future is

resilient
connected
diverse

100% sustainable

